

PART OF THE S.E. 1/4 OF
SECTION 17, T.6N.,R.1W., S.L.B.&M.

IN OGDEN CITY

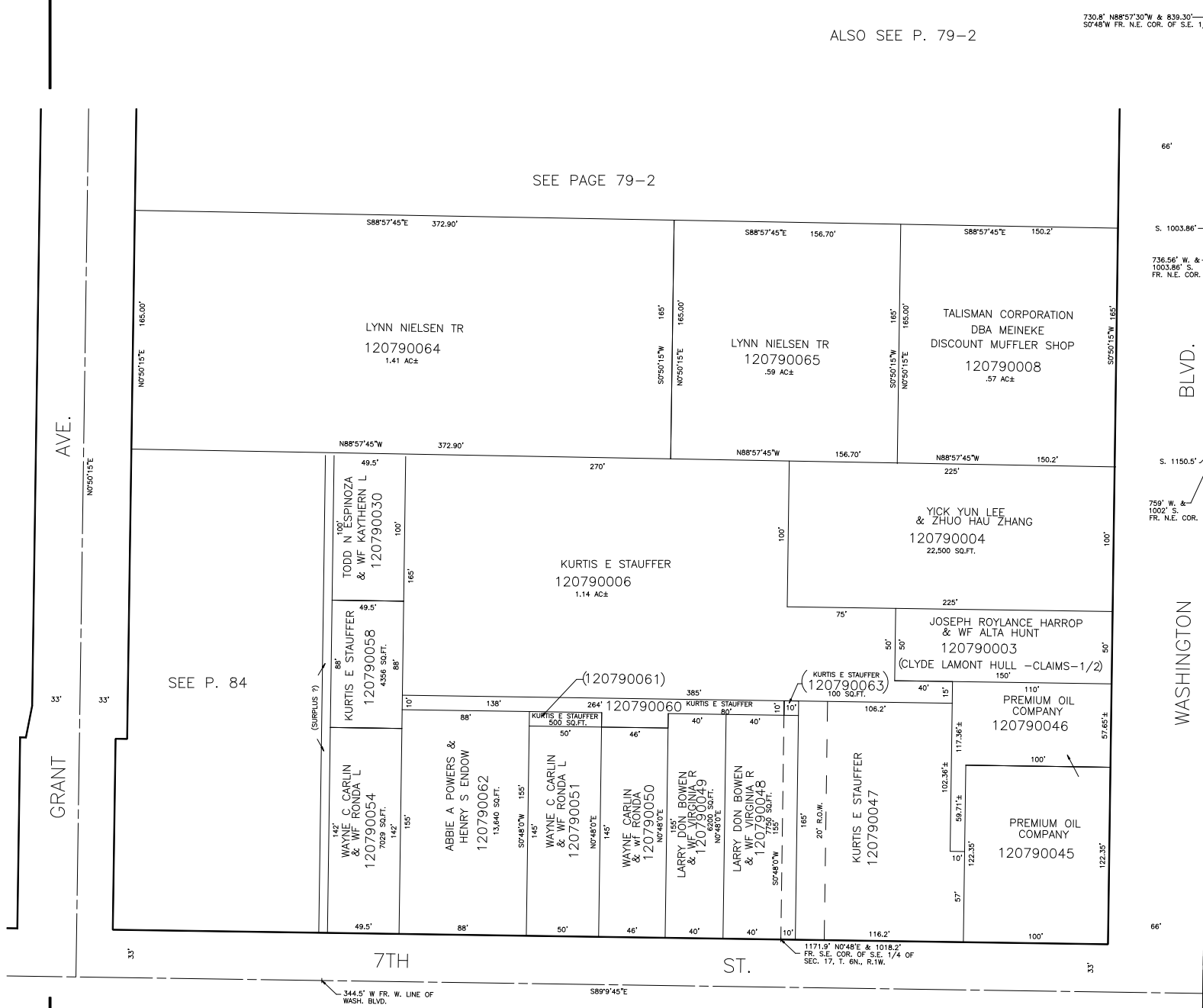
SCALE 1" = 50'

TAXING UNIT: 25

79-1

ALSO SEE P. 79-2

730.8' N88°57'30"W & 839.30'
57'48"W FR. N.E. COR. OF S.E. 1/4



GRANT AVE.

WASHINGTON BLVD.

7TH ST.